



REFRIGERATOR 670 L, GLASS DOOR

Model: REX71GR60M

Article no: 725486

Power supply: 230V 1Ph ~60Hz

Full glass door refrigerator with internal and external structure in 304 AISI stainless steel; external back panel in galvanized steel and bottom panel in anti-corrosive material.

Digital control with cabinet temperature display, setting, and manual activation of the defrost cycle. Fully compliant HACCP digital controls include visible alarms.

The optimized back-to-front forced air flow provides even temperature distribution and fast cooling in any condition. Fitted with 75 mm-thick cyclopentane insulating foam.

The door features a lock and door microswitch to switch off the fan when the door is opened.

Hidden evaporator to guarantee higher storage capacity and fewer corrosion problems. Built-in refrigeration unit; ventilated operation; internal backlight.

This refrigerator is designed to perform efficiently in temperatures up to 32°C. Additionally, the insulation used in this product is free of harmful substances such as CFC and HCFC.

MAIN FEATURES

- Right hinged lockable glass door
- Large storage area, suitable to contain 2/1 GN grids or shelves on anti-tilt runners
- Optimized back to front forced air flow
- Performance guaranteed at ambient temperatures of +32°C
- Operating temperature +2 to +10°C
- Automatic defrost
- Hidden evaporator
- Easy access to the main components for maintenance
- Self-closing door that can be fully opened up to 180°

REX71GR60M, 725486

05-02-24 (13:11)

Model Number Specific	REX71GR60M
Voltage (V)	230
Phase	1
Frequency (Hz)	60
Loading (kW)	0,22
Fuse (A)	10
IP Class	21
Width, net (mm)	710
Depth, net (mm)	835
Height, net (mm)	2050
Weight, net (kg)	112
Weight, gross (kg)	128
Connection Cable, length (m)	3
Plug type	Schuko
Adapted for container sizes	GN
Ambient temperature, max (°C)	32
Automatic defrost	Yes
Basket sizes	GN2/1
Certifications	CE
Condensor type	Air cooled
Cooling fan	Yes
Door Hanging	Right (is reversible)
Door, type	Glass
Doors, qty (pcs)	1
Exterior	Stainless steel
Grids, qty (pcs)	3
Installation, type	Floor model
Locking device, included	Yes
Marine feet	Yes
Noise level <(dB)	70
Refrigerant type	R290
Temperature, max (°C)	10
Volume, refrigerator (L)	670

INCLUDED IN DELIVERY

Supplied with 3x2/1GN Rilsan coated grids and 3 sets of 2 stainless steel grid runners.

Loipart AB (HQ), Sweden
Tel. +46 313 920 100, loipart@loipart.se

LMG Finland oy, Finland
+358 40 664 6680, lmg@lmg.fi



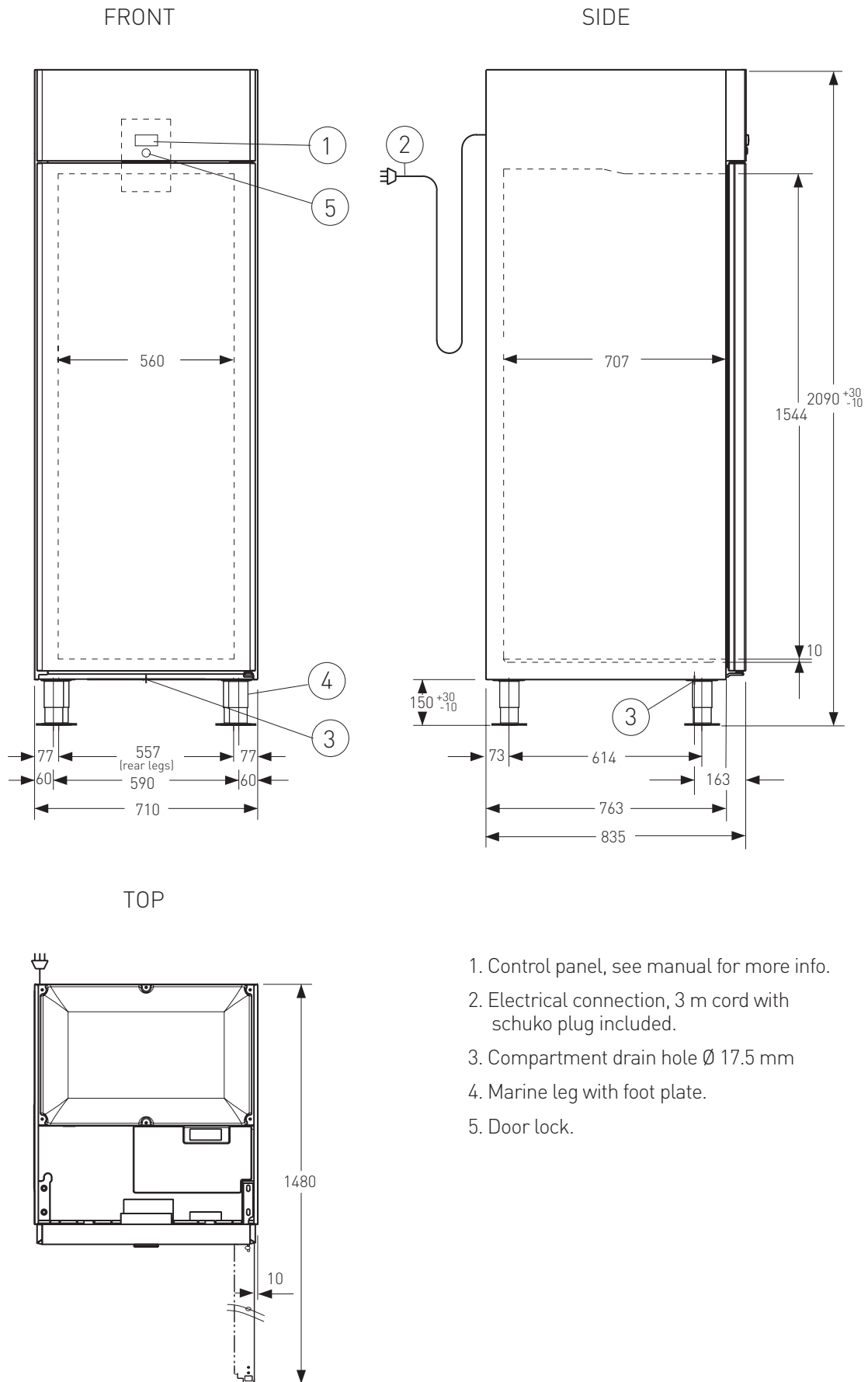
Loipart USA inc, USA
Tel. +1 954 530 5276, loipartusa@loipart.com

Loipart SEA Pte Ltd, Singapore
Tel. +65 674 99 100, contact@loipart.sg

Visit us at www.loipart.com

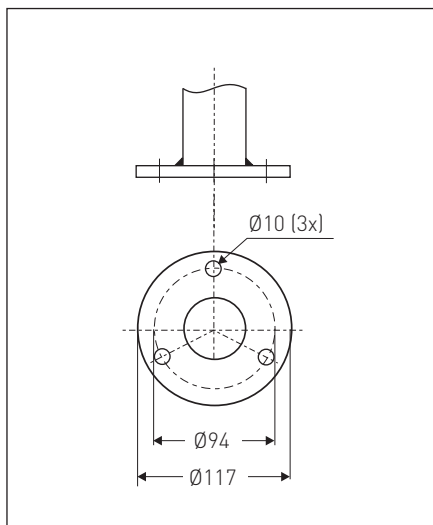
DIMENSIONS

Model: REX71FR, REX71FR60M, REX71GR60M, REX71FRE Rev. 5
REX71GR

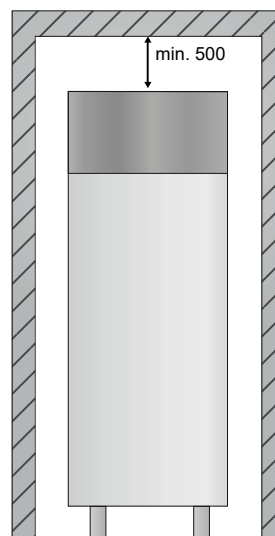
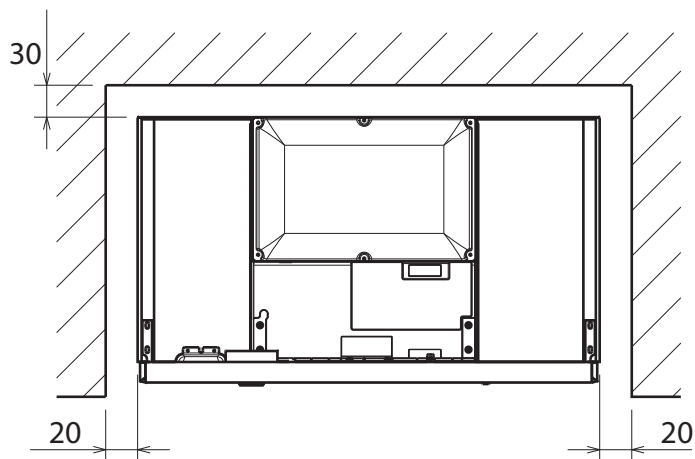


1. Control panel, see manual for more info.
2. Electrical connection, 3 m cord with schuko plug included.
3. Compartment drain hole Ø 17.5 mm
4. Marine leg with foot plate.
5. Door lock.

DETAIL OF MARINE FOOT



POSITIONING



MARINE INSTALLATION

The appliance must be levelled; otherwise its operation could be affected. Adjust the height and level by means of the levelling feet, checking that the door opens and closes properly.

NOTE! For additional instructions of installation please see separate Installation instructions.