



## REFRIGERATOR 470 L, R134

Model: PS04R1FM

Article no: 691336

Power supply: 230V 1Ph ~60Hz

Full-door refrigerator in stainless steel with an a large external panel and foot pedal.

The refrigerator's large digital display has a humidity selection button (3 preset levels), cabinet temperature display setting, and turbo frost cycle (to rapidly cool warm loads). The HACCP-compliant control with alarms and history of up to two months of events are kept in memory.

The model has a cleaning-free condenser where the structure of the wireframe condenser prevents dust and grease accumulation, thus avoiding periodical cleaning operations and reducing energy consumption.

A fully automatic Frost Watch Control will defrost when required and automatic evaporation of defrost water. The defrost starts only when ice builds up in the evaporator and adapts the defrosting duration to guarantee perfect ice removal and optimizing energy consumption.

The self-closing, on-site reversible door has a microswitch to switch off the fan when the door is opened. The optimized airflow within the chamber guarantees uniformity of temperature on all grids.

The refrigerator is prearranged to fit RS485 port to connect to a remote computer and integrated HACCP systems.

### MAIN FEATURES

- Prearranged to fit RS485 port to facilitate connection to a remote computer and integrated HACCP systems.
- Self-closing and on-site reversible left/right doors.
- Prearranged for remote alarm.
- Low noise level.
- AISI 304 runners with grids stopper for marine installations.
- Tropicalized unit (43°C ambient temperature).

PS04R1FM, 691336

05-02-24 (13:02)

## TECHNICAL DATA

PS04R1FM, 691336, 05-02-24 (13:02)

<b>Model Number Specific</b>	PS04R1FM
<b>Voltage (V)</b>	230
<b>Phase</b>	1
<b>Frequency (Hz)</b>	60
<b>Loading (kW)</b>	0,295
<b>Fuse (A)</b>	10
<b>IP Class</b>	X5
<b>Width, net (mm)</b>	600
<b>Depth, net (mm)</b>	700
<b>Height, net (mm)</b>	2075
<b>Weight, net (kg)</b>	104
<b>Weight, gross (kg)</b>	122
<b>Volume, net (m3)</b>	0,86
<b>Volume, gross (m3)</b>	1,11
<b>Energy Class</b>	D
<b>Connection Cable, length (m)</b>	3
<b>Plug type</b>	Schuko
<b>Adapted for container sizes</b>	GN
<b>Ambient temperature, max (°C)</b>	43
<b>Automatic defrost</b>	Yes
<b>Basket sizes</b>	GN2/1
<b>Certifications</b>	CE
<b>Condensor type</b>	Air cooled
<b>Cooling fan</b>	Yes
<b>Door Hanging</b>	Right
<b>Door, type</b>	Stainless steel
<b>Doors, qty (pcs)</b>	1
<b>Exterior</b>	Stainless steel
<b>Filling factor refrigerant (g)</b>	160
<b>Grids, qty (pcs)</b>	4
<b>Installation, type</b>	Floor model
<b>Locking device, included</b>	Yes
<b>Marine feet</b>	Yes
<b>Noise level &lt;(dB)</b>	52

Loipart AB (HQ), Sweden  
Tel. +46 313 920 100, loipart@loipart.se

LMG Finland oy, Finland  
+358 40 664 6680, lmg@lmg.fi



Loipart USA inc, USA  
Tel. +1 954 530 5276, loipartusa@loipart.com

Loipart SEA Pte Ltd, Singapore  
Tel. +65 674 99 100, contact@loipart.sg

Visit us at [www.loipart.com](http://www.loipart.com)

<b>Other general information</b>	On site reversible door.
<b>Refrigerant type</b>	R134a
<b>Temperature, max (°C)</b>	10
<b>Volume, refrigerator (L)</b>	470

## INCLUDED IN DELIVERY

4 of Plastic coated grid (552x442). 4 of a Kit pair of runners.

---

Loipart AB (HQ), **Sweden**  
Tel. +46 313 920 100, loipart@loipart.se

LMG Finland oy, **Finland**  
+358 40 664 6680, lmg@lmg.fi



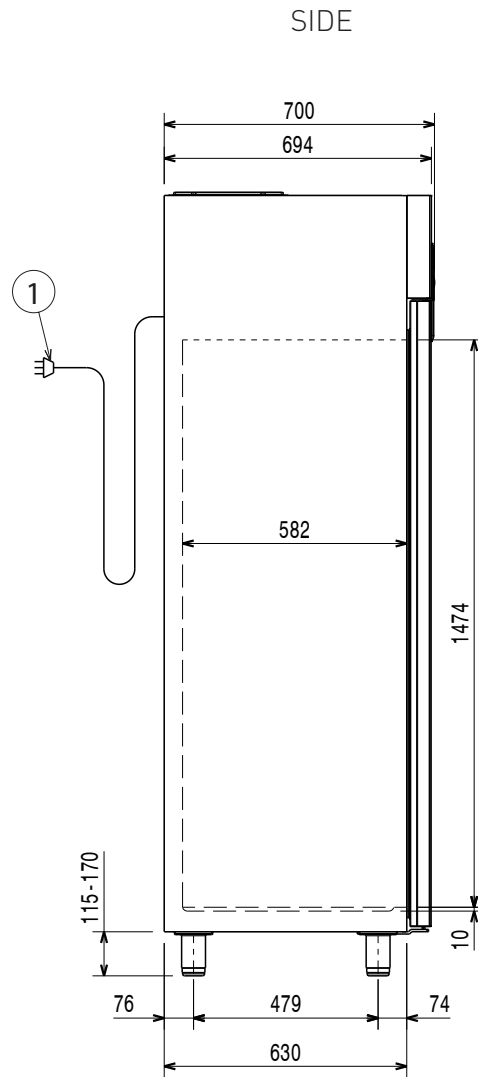
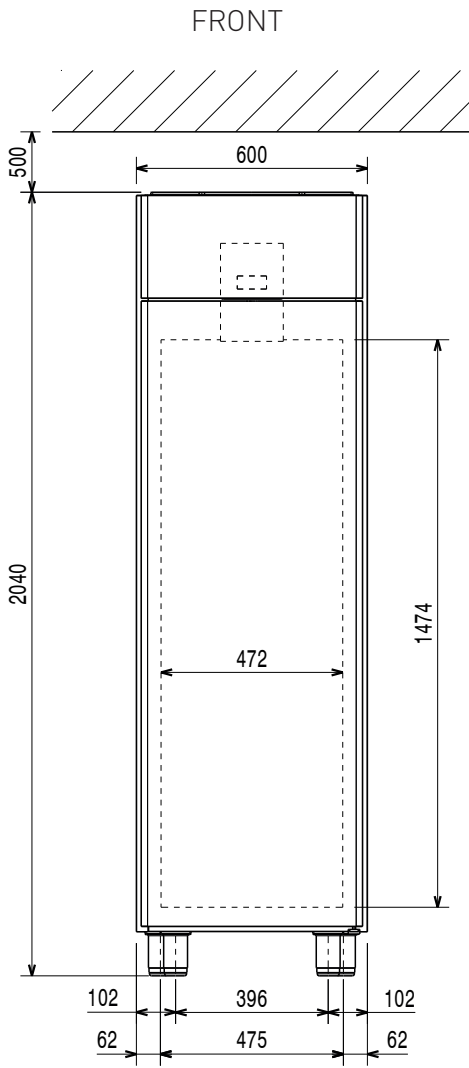
Loipart USA inc, **USA**  
Tel. +1 954 530 5276, loipartusa@loipart.com

Loipart SEA Pte Ltd, **Singapore**  
Tel. +65 674 99 100, contact@loipart.sg

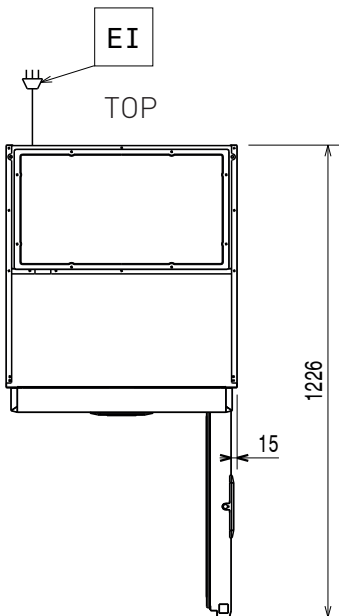
Visit us at [www.loipart.com](http://www.loipart.com)

# DIMENSIONS

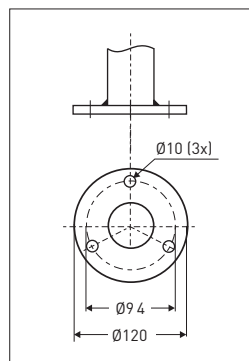
Model: PS04R1F Rev. 1  
PS04R1FM



1. Electrical connection



DETAIL MARINE FEET



POSITIONING

