



REFRIGERATED BASE, 4 DRAWERS, 1200MM

Model: E7TTBPCOMIN

Article no: 371375M

Power supply: 230V 1Ph ~60Hz

The refrigerator base is to be installed beneath the top unit of the L700 or the 700XP series. The base has a built-in compressor and forced air circulation for rapid cooling and even temperature distribution. It is suitable to work with ambient temperatures up to +43°C.

The temperature in the drawers is suitable for storing meat, fish, and dairy as it is adjustable from -2°C to +10°C. The anti-tilt runners in the drawers accept GN 1/1 containers.

The model has flush-fitting junctions and right-angled side edges to eliminate gaps and dirt traps between units. The exterior panels in Stainless steel with Scotch Brite finish meet the highest hygiene standards.

MAIN FEATURES

- Made for the tops units of the L700 and the 700XP series
- Designed for modular installation into the cooking block
- Access to all components from the front.
- 150 mm height-adjustable feet

E7TTBPCOMIN, 371375M
12-02-24 (12:16)

Subject to change without notice
For correct installation, refer to the installation manual

TECHNICAL DATA

E7TTBPCOMIN, 371375M, 12-02-24 (12:16)

Model Number Specific	E7TTBPCOMIN
Voltage (V)	230
Phase	1
Frequency (Hz)	60
Loading (kW)	0,4
Max Amps in Phase (A)	2
IP Class	24
Capacity (L)	152
Width, net (mm)	1200
Depth, net (mm)	700
Height, net (mm)	600
Weight, net (kg)	95
Weight, gross (kg)	110
Volume, net (m3)	0,5
Volume, gross (m3)	0,66
Ambient temperature, max (°C)	43
Filling factor refrigerant (g)	85
Noise level <(dB)	70
Refrigerant type	R290

Loipart AB (HQ), **Sweden**
Tel. +46 313 920 100, loipart@loipart.se

LMG Finland oy, **Finland**
+358 40 664 6680, lmg@lmg.fi



Loipart USA inc, **USA**
Tel. +1 954 530 5276, loipartusa@loipart.com

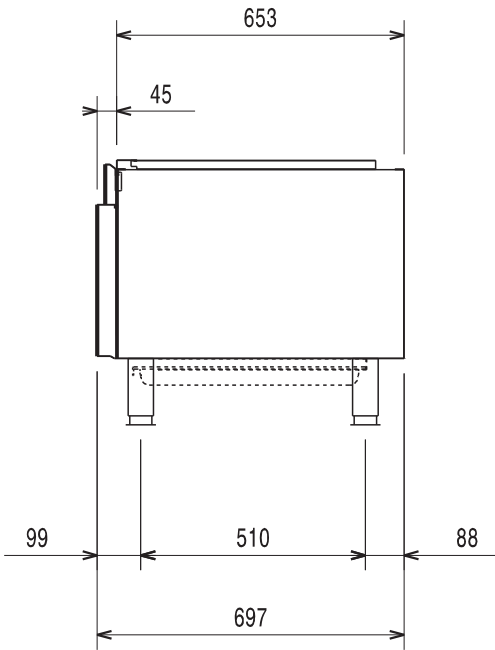
Loipart SEA Pte Ltd, **Singapore**
Tel. +65 674 99 100, contact@loipart.sg

Visit us at www.loipart.com

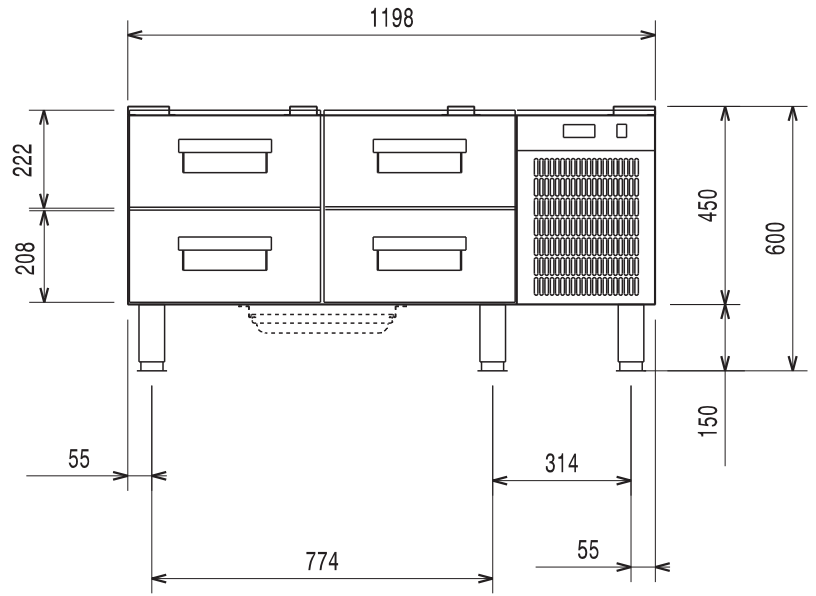
DIMENSIONS

Model: E7TTBPCOMIN Rev. 1

FRONT

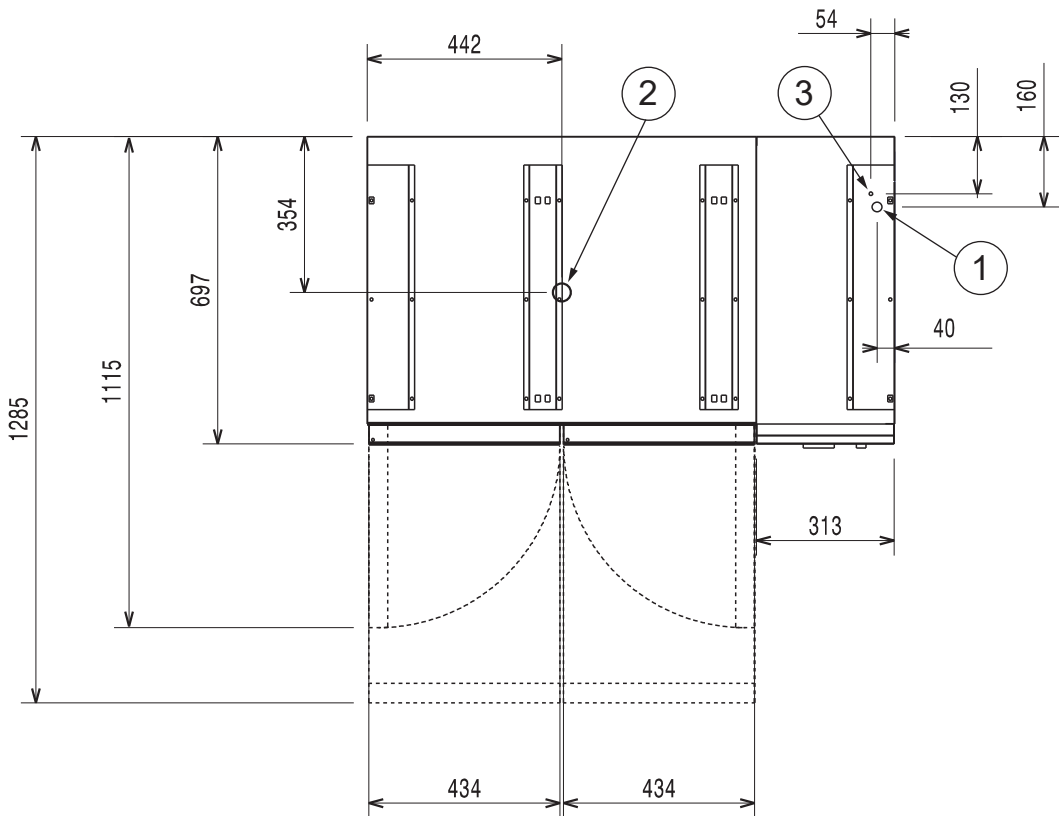


SIDE



1. Electrical connection
2. Condensate drain (only 60Hz)
3. Equipotential screw

TOP



DETAIL MARINE FOOT

