

Frying Pan: Beha 3140 GSL

Construction

The pan is made of solid cast iron and 3 elements working together with the cast iron ensures a perfect heat distribution. This frying pan is built upon cardanic suspensions which ensure a horizontal cooking surface during pitching and rolling of the ship. Easy tilting by handle with locking device for securing the pan in position. The lid is made of 18/8 stainless steel and can be kept in an open position by means of spring-loaded hinges.

Use

The power output is controlled by an energy regulator. Regular use of vegetable oil at the frying surface will keep it in good shape for many years. It is recommended to have a well in the front of the frying pan



Power supply

Voltage: 230/400/440V-3phase
Other voltages on request

Capacity

Frying area Ø=500mm

- EASY CLEANING
- HIGH CAPACITY
- SUPERB RESULTS
- RECYCLABLE

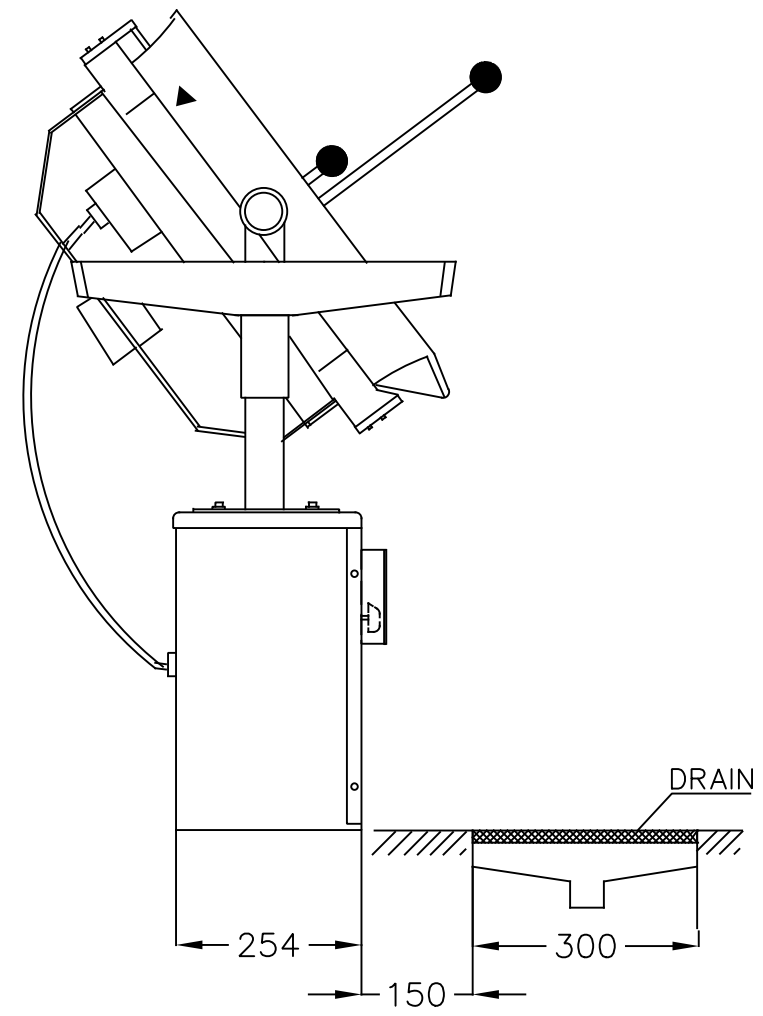
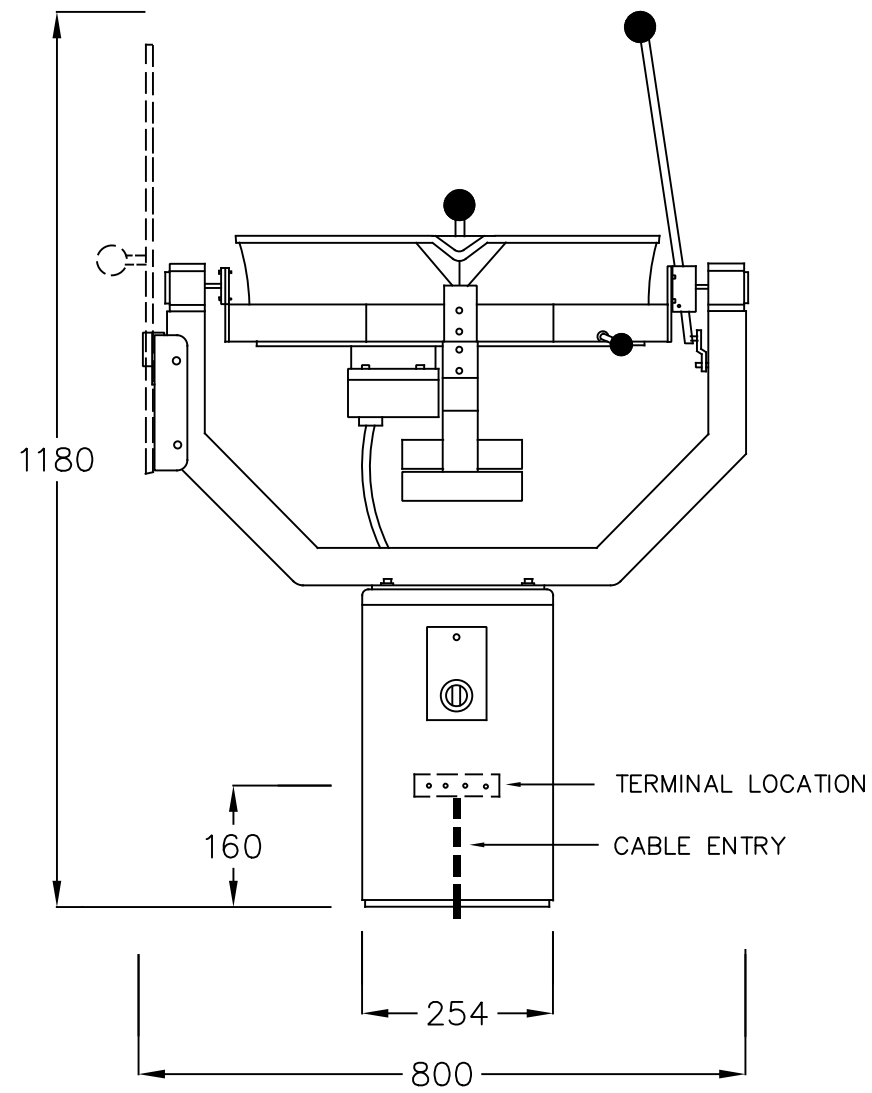


01.11

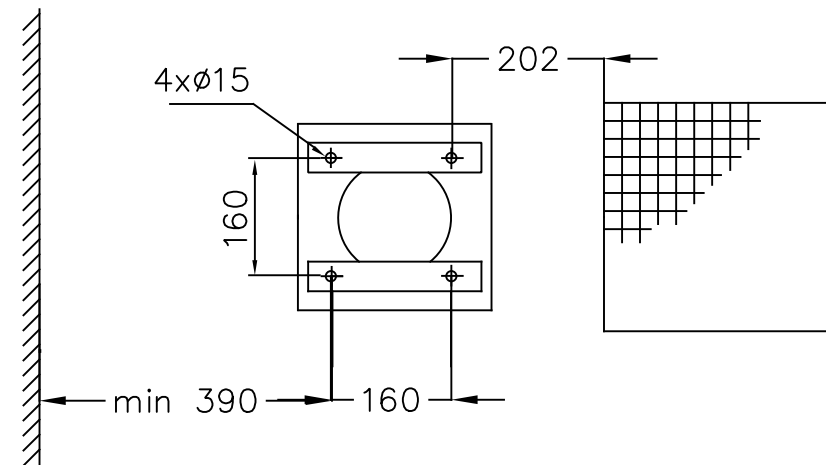
Beha-Hedo Industrier AS
P.O.Box 2704 Kjørbekk
N-3702 Skien, Norway

Tlf +47 35 93 20 00
Fax +47 35 93 20 01
E-mail: beha-hedo@beha-hedo.com
www.beha-hedo.com

**BEHA
HEDO**
INDUSTRIER A/S



FLOOR FASTENING DETAIL



FLOOR DRAIN MIN 300x300 mm

Voltage	Rated Power	Fuse	Weight
380-440/3/50-60	5 kW	16A	85 kg
460-480/3/50-60	6 kW	16A	85 kg
220-240/3/50-60	5 kW	16A	85 kg



TECHNICAL
INFORMATION

GYRO FRYING PAN 3140 GSL

Date: 2021.12.13

Dwg.no.117754